



SOUTH EDINBURGH MEETING

August 2022



Post-Meeting picnic Sun 10 July

MEETINGS FOR WORSHIP

Meetings **every Sunday 10.30-11.30 am** at the Open Door, or sometimes recently in a local garden, and (hybrid) also remotely by Zoom. *Arrangements still be subject to change. Please check emails on the day, sent via our South Edinburgh Announce email list. To join the list, see <https://quakerscotland.org/south-edinburgh>*

On the **First Thursday of each month** we also meet for **30 min at 8 pm** by Zoom, followed by chat.

Other local meetings

Central Edinburgh and Portobello-Musselburgh are closest. Times are listed in SESAME, but for full info and a map, see <https://quakerscotland.org>

Several South Edinburgh Friends also attend Central Edinburgh's **Midweek Meeting on Wednesdays**, 12.30 for 30 mins at Victoria Terrace meeting house. Tea and coffee are available, and you can bring a packed lunch.

SPECIAL COLLECTION

Our collection in August is for **Edinburgh Peace and Justice Centre**. Working since 1980 to promote nonviolence, human rights, conflict resolution, disarmament and ecological sustainability. <https://peaceandjustice.org.uk> To donate, click on Get involved – Support our Work. EPJC Co-convenor David Somervell will speak to this.

QUAKER EVENTS

Traditionally Edinburgh Quaker events are very few in July and August. But:

Evening Meeting by Zoom on first Thursdays at 8pm, so **Thur 4 Aug**.

Local Meeting for Business is scheduled for **Sun 14 Aug**. This may be held in the evening by Zoom instead of after MfW, or even on another day – final decision will be announced at MfW and in emails.

VENUE 40 – there is a smaller, all charities Fringe programme running at Victoria Terrace this year.



Performances in the first week listed on page 3. Throughout, the exhibition of *Loving Earth* panels, 2-6 pm Mon-Sat, **8-27 Aug** (<http://lovingearth-project.uk>). There are still gaps for volunteer stewards for the exhibition, please contact Janet Grimwade if you can help.

These Edinburgh Central events are open to South Edin too. They are back to in-person only. Qs to Rachel Frith of Central meeting.

Coffee – at Rachel's house on first and third Thursdays, from 10.15 am. Please contact Rachel in advance to ensure numbers OK.

Singing group is on *hols* during July and August.

Book Group – meets 4th Sundays at 12.15 after Central MfW, but may be missing August to give more time to read September's (t.b.c.).



Tap by Harry Wingfield, 1970 (page 2).

FRIVOLOUSLY

Further tales of Obsession: **single author, single topic website of the month**



'Then we wash our hands'
from *Going to School*, 1959.

LadyBirdFlyAwayHome is a respectful but not-too-serious presentation of the glory of Ladybird books. And yet proprietor Helen Day is clearly too serious about them. Beguiling and immensely readable at <https://ladybirdflyawayhome.com>

Favourite artist: Harry Wingfield set the optimistic, colourful artistic style, and his is a fascinating story too. He concedes some of the later criticisms of the series; but some he defends. Day must be correct that 'they truly did hit at the heart of an almost universal desire for a happy family life'. A long interview with a 91 year old Harry Wingfield is available via the Wayback Machine for dead websites at <https://bit.ly/3NkyVml>

Don't miss **The Strange Tale of the Missing Father of Khong Guan**. A fascinating mystery around an illustration borrowed (right) to decorate biscuit tins, that has by all accounts enthralled Indonesia. Helen Day has the answer! At <https://bit.ly/3OoCcD8>



Twitter Account of the Month. [@LBFlyawayhome](https://twitter.com/LBFlyawayhome) also truly brightens and calms a timeline. Add yourself to over 50,000 followers of her more than 36,000 Tweets (rising daily).

WIKIPEDIA PAGE OF THE MONTH



Sakeru Gum – Long Long Man. A genius series of Japanese ads. Even the English subtitled version became 2.6M views famous. Comments include 'This short 6 min video has more storyline than a whole movie' and 'That was such an emotional roller coaster I need to lie down'. Relish it at <https://youtu.be/sZsJyCyGBSI>

Long Long Man is our **Wikipedia page of the month** (169 views/day). Actor Risako Ito illustrated. The actor playing LLM, Yuki Yoshi Ozawa, comes from a culturally successful family that includes conductor Seiji Ozawa.

SERIOUSLY

FESTIVAL SUGGESTIONS



VENUE 40 (Victoria Terrace Meeting House) – The *Loving Earth* exhibition (see front page) is on **Mon-Sat Aug 8-27th**, every afternoon from 2-6 pm. Stage events during the first week only:

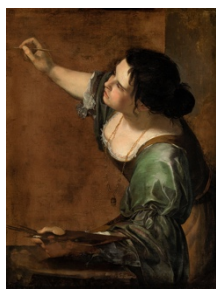
Newbury Youth Theatre *The Lost Letters* at 2.00 pm 8-13 Aug

Majk Stokes concerts *Heroes Revised* at 4.30 on 6,7,9,10 and 12.

e-tickets from <https://edfringe.com> (no box office at Meeting House)

The Mistake – Michael Mears was the barman who brings Hugh Grant and Andie McDowell together in *Four Weddings And A Funeral*, but also an acclaimed serious actor and peace activist. His new play focuses on the human impact of Hiroshima on a bomber pilot, a scientist, and a victim. 80 mins, **Aug 5 to 27**, 10.45 am at The Space on North Bridge. Hiroshima Day is 6 Aug, Nagasaki Day 9 Aug.

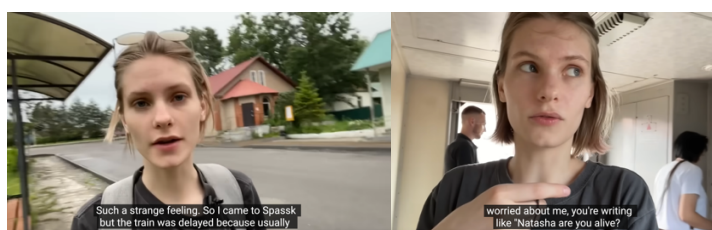
Mears' previous widely heard play about conscientious objectors, *This Evil Thing*, was like this year's play also based on the words of those involved. More at www.michaelmears.org Tickets: <https://tickets.edfringe.com/whats-on/mistake>



ART – Margaret Anderson recommends the Barbara Hepworth exhibition at Modern 2 until October 2nd. Too modern? Another Margaret suggests you try the Queen's Gallery at Holyrood, 'Masterpieces from Buckingham Palace', which has some unmissable classics, including this selfie from 1638 by Artemisia Gentileschi. Full prices £12 and £8.50.

According to information various, these are only 2 of 35+ art exhibitions that you can choose from in August.

NOT THE FESTIVAL



A vlog from Russia - Natasha's adventures (318,000 YouTube subscribers), since Jan 2019 providing a no-frills description of life for a wry commentator from the far east of Russia. Through university, returning home to rural-industrial Spassk, visiting some other cities. Titles include '*Shopping, cement district, and life in Spassk*'. During 2022 she has publicly hated the war with Ukraine, putting herself at some risk.

Her latest at <https://youtu.be/bjINQm40SBE> is a medley of fragments as she finally decides to leave Russia. But personality comes through, and it may make you want to go to watch earlier ones at www.youtube.com/c/NatashasAdventures/videos

NEWS

Failte project update: This is the Area Meeting project to support a refugee family settling in Edinburgh. We hope to welcome our Syrian family, who have been living in a refugee camp in Egypt, in mid-August. Volunteer opportunities may still be available – see www.quakerscotland.org/south-east/failte-edinburgh Knowledge of Arabic or ESOL especially sought, but there will be other important needs too. Contact Esther Shreeve.



Scottish Quakers are one of over 30 faith groups who have signed an open letter urging action to **meet the Glasgow COP26 commitments**.
<https://interfaithglasgow.org/cop27-open-letter>

Meetings for Witness for Peace in Princes St

Gardens will be held on Sundays **25 Sep**, **13 Nov**, coinciding with days of Faslane Meetings.



Join another meeting on World Quaker Day?

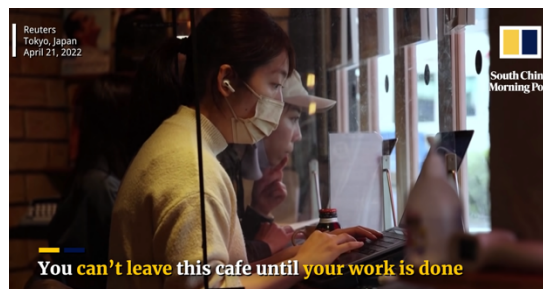
Friends World Committee for Consultation invites Quakers everywhere to join in on **Sun 2 Oct** by sending visitors to another Quaker community – in person or online. Sign yourself up at www.worldquakerday.org

Preparing for Quaker Week – weekly sessions online from Woodbrooke, alternating between Thur lunchtime and Tue eve, 28 July-22 Sep.
<https://bit.ly/3z8AJu1>

Quaker Week is 24 Sep – 2 Oct

INTERWEBS

Procrastinator's nudge



Prone to spend hours watching fascinating videos at the expense of work and life? Here is a great idea for maintaining focus when you need, or alternatively a niche business opportunity. A coffee shop with three levels of service to keep you on track https://youtu.be/_ZPw7gRc-VU

Mild: verbal check on progress when you pay
Normal: physical progress check every hour
Hard: staff stand behind you if necessary

Our newsletter is usually published near the last Sunday of each month. neilturn@gmail.com awaits your feptember festival feedback. Find this edition, plus archives of previous, at www.quakerscotland.org/south-edinburgh*

* What is *f*

It is a *Long Long Ess*. But is *f* correctly used here? Well it has been considered archaic for about 200 years, except in algebra. But for more detailed guidance, consult Wikipedia on **Long S** (357 views/day).