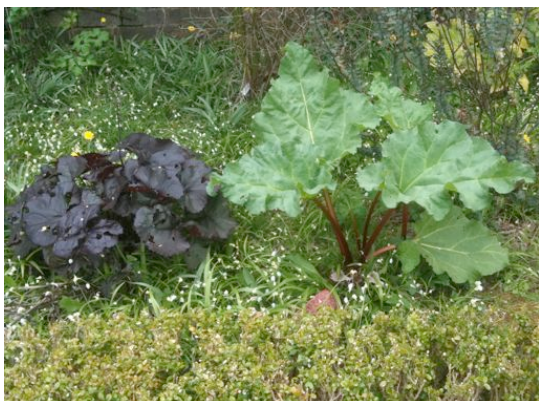




## SOUTH EDINBURGH MEETING

May 2011



### MEETINGS FOR WORSHIP

**Every Sunday** at 10.30 am at the Open Door, 420 Morningside Road, EH10 5HY, with separate Children's meeting.

**Every weekday at Victoria Terrace:** 8am for 30 mins Mon-Fri.

**At Portobello: 1<sup>st</sup> Sunday** at Old Parish Church Bellfield St, EH15 2BP at **7.30 pm** for half an hour; and **4<sup>th</sup> Sun** at **10.30 am** at CHANGES Community Health Project, 108 Market Street, Musselburgh EH21 6QA. (NEW LOCATION – a trial till June)

**At Barony St: 4<sup>th</sup> Sunday.** 7pm at 33 Barony St (buzzer 7 via Albany Lane doors). More info: Tony Gross or Marjorie Farquharson.

**Central Edinburgh** meeting has an early Sunday morning meeting at 9.30am in addition to the regular 11.00am meeting at Victoria Terrace.

### SPECIAL COLLECTION

**May's** special collection is for the **QPSW internship programme**. Alison Burnley will speak to this. [www.quaker.org.uk/aims-quaker-peace-social-witness-qpsw](http://www.quaker.org.uk/aims-quaker-peace-social-witness-qpsw) and [www.quaker.org.uk/volunteering-and-courses](http://www.quaker.org.uk/volunteering-and-courses)

### LOCAL MEETING EVENTS

**Mini-Mart** in aid of Wiston Lodge is after Meeting on each **first Sunday**. [www.wistonlodge.co.uk](http://www.wistonlodge.co.uk)

**8<sup>th</sup> May** Children and adults welcome to **Meet up on the Meadows** after meeting (Central event).

**8<sup>th</sup> May Visit another meeting** – Polmont will particularly welcome visitors for 10.45 Meeting.

**15<sup>th</sup> May Meeting for Business** after MfW

**21<sup>st</sup> May (Sat) Area Meeting** at Kelso Meeting House, 11.15 – 4pm.

### OTHER QUAKER EVENTS



**NFSG-Summer School-Shindig 50<sup>th</sup> Year Reunion** – at Central Edinburgh on **Sat 7<sup>th</sup> May**. Organised by Roz Currie, Bron Currie, Ken Latham.

[summerschoolreunion@gmail.com](mailto:summerschoolreunion@gmail.com)

**Singing Group** meets on second Tuesday of each month at Victoria Terrace. 'Singers with perfect pitch very welcome!'. Also **Taize singing** with the Penicuik Vault Singers in the sequence Crichton, Rosslyn Penicuik and Seaton at 3.15 on Sundays. Contact Rachel Frith.

**Quaker Lesbian and Gay Fellowship** meets on 2<sup>nd</sup> Wednesdays, 7pm at the Glasite Meeting House, 33 Barony St (buzzer 7 via Albany Lane doors) Contact Mary Woodward or [edinburgh.glgf@gmail.com](mailto:edinburgh.glgf@gmail.com) or 07543 975 590.

**Reading the bible with Friends** Third Tuesdays, 7pm at Victoria Terrace. Currently looking at Romans. More info at <http://bit.ly/9JgoU0>. Contact Alastair Reid, 447 4191 or [AlastairReid@btinternet.com](mailto:AlastairReid@btinternet.com)

**Edinburgh Women's Interfaith Group** 3<sup>rd</sup> Wednesday of each month at 7pm. Shared (vegetarian) food followed by discussion or talk. Usually at Methodist Church, Nicholson Square. Contact Alison Burnley or Bronwyn Harwood.

**Book Group.** Usually Third Sundays at 1.15pm at Central Edinburgh Meeting House; 15<sup>th</sup> May Andrei Makine's 'A Life's Music' (Qs to Rachel Frith).

Save resources by downloading me from [quakerscotland.org/south-edinburgh](http://quakerscotland.org/south-edinburgh)

[More events on the Back Page](#)

## Minutes of Local Meeting for Business, Sunday 20<sup>th</sup> March 2011

13 Friends were present. **Prevented:** Chris Booth, Alastair Cameron, Mary Jane Elton, Rachel Howell.

### **Minutes:**

Minutes of the Local Business Meeting held on 16th January 2011 have been circulated. Item 7/11 is amended and the new date for the Wiston Lodge weekend is to be 2nd-4th September 2011. The minutes were accepted.

### **9/11 – Special Collections**

We endorse the recommendation of the February meeting to support a different charity each month. We thank Hilary Davies for her feedback. We will continue to support the main Quaker funds eg. the Common Fund, which is used to support central Quaker work, and QPSW. We would like the other charities to fall within the four categories of local charities, work in developing Countries, Peace and charities for people on the margins of society.

We came up with a list of charities we would like to see supported and about which the Meeting could be informed by a Friend who has some personal connection or enthusiasm. We left 2 months open. The decision below will be passed to Mary Woodward to organise but the charities selected for the most immediate months are:

May: QPSW internship scheme for young people (Alison Burnley).

June: Young Carers (Susie Reade).

July: Refugee Survival Trust. (David Turner).

Following months:

Thandi Orphanage and school in S. Africa (Deirdre Armstrong).

A charity working with bereaved Israelis and Palestinians together (Hilary Davies).

Quaker Bolivia Link (Deirdre Armstrong).

Peace Direct (David Turner).

Further suggestions should be made to Mary Woodward who will bring them to Local Meeting.

### **10/11 – Quaker Week and Outreach Group (see 8/11)**

Marianne Ferguson Rice has contacted Sandra Riddell about this group. Alison Burnley has attended the initial meeting and will attend the next one on March 23rd 2011.

It was agreed that our Meeting will arrange our own outreach events. We hope for guidance with publicity. We understand there are posters which state for example, ' I'm a nurse, a runner and a Quaker.' We discussed the need for a 'human face' and dilemmas of the celebrity culture. We spoke of the need for the focus of our outreach to be carefully chosen to avoid dissipation of energy.

Different ways of outreach were listed; speaking to others, T shirts with relevant slogans, meetings in coffee shops like Costa cafe churches, Facebook, adverts or articles in Metro or Herald and Post. We do not think it necessary to confine our outreach to Quaker 'week'. We would be better to link it with special events as we hope will occur with the planned visit of Jocelyn Burnell in autumn.

Quaker week begins October 3rd. Sylvia Massey has booked the window to be set up Saturday 1st October and removed Saturday 15th October.

### **11/11 – QPSW representative**

Ida Turner has asked to lay down her role as our QPSW representative. Deirdre Armstrong volunteered to carry this on. Ida will send Deirdre's name forward to Friends' House.

### **12/11 All Age Worship**

Local Meeting received a minute from Children's Committee stating that the organisation of all age worship should come out of Local Meeting. We discussed ambivalence about All age worship and whether indeed it is a true Meeting for Worship or not. We decided we need to return to basics and reconsider the purpose of All Age Worship. We decided to hold a review of All Age Worship as a major item in our Meeting in an autumn Local Meeting.

All Age Worship needs to be planned and themed. We welcome any members of Meeting to be involved in this process. Elders and Overseers will be asked to approach someone to form a small planning group for an All Age Worship in June. In addition Elspeth Lucey will be asked by Sylvia Massey to join this group. Deirdre Armstrong will provide a link between that small group and the children's rota. This All Age Worship will be on a Sunday suitable to the small planning group and the children in June 2011. All Age Worship will also be at Wiston Lodge on Sept 4th..

### 13/11 Clerking arrangements (see 5/11)

There is still an open invitation to join the clerking team. Contact Chris Booth or Susie Reade. Meanwhile the clerking team review is planned for Tuesday 29th March.

### 14/11 Accounts

Martin Burnell apologised for the accounts being late. He will present them at the May Local Meeting. He will circulate them before that to allow time for our consideration.

---

## Yearly Meeting Gathering

This year Yearly Meeting Gathering will be held at the University of Kent in Canterbury from 30 July to 6 August 2011. Yearly Meeting Gathering (YMG) brings together Quakers and their families for a week of worship, learning, celebration, fun spiritual growth, Quaker business - and the connections between all these.

The theme is **Growing in the Spirit: change the way we live to sustain the world we live in** This theme includes not only how we sustain our planet, but the smaller worlds we live in, such as our local and area meetings and wider communities. The theme will be explored by all ages and will consider four areas.

1. Sustaining the natural world
2. Sustaining our local society: Nurturing a shared vision
3. Sustaining our local Quaker community: Renewing our vision
4. Sustaining our personal lives: Spiritual journeying

Further details of Yearly Meeting Gathering may be found at [www.quaker.org.uk/ymg](http://www.quaker.org.uk/ymg)

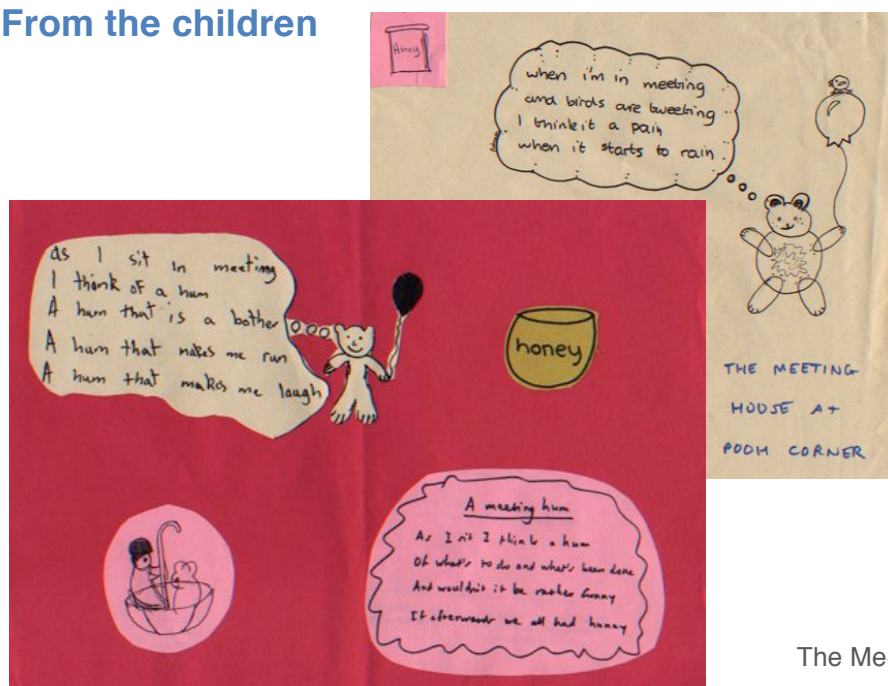
---

## Accommodation for Fringe volunteers: 7th - 28th August

The Festival Committee has been working through the winter on the programme and will shortly be sending out invitations to volunteers. We shall be looking for 15 or 16 bed spaces each week. Some years I have been able to accommodate five Friends each week so can claim to be an experienced host and I am able to recommend most warmly the experience. They are all capable people and only require breakfast which they will prepare for themselves if you are having a lie-in. Please give thought to whether you can provide a bed or beds. Contact Rachel Frith.

---

## From the children



The Meeting house at Pooh Corner

## MORE EVENTS

**Mental health in our meetings** – a Woodbrooke course, June 3-5.

[www.woodbrooke.org.uk/courses](http://www.woodbrooke.org.uk/courses)

**Yearly Meeting Gathering** is at Canterbury, **30 Jul-6 Aug**. Page 3 and [www.quaker.org.uk/ymg](http://www.quaker.org.uk/ymg)

**NFSG Shindig** is 6th-13th August.

**Our weekend at Wiston Lodge** has been changed to the weekend of **2-4 September**. Mary Jane is organising activities with the help of Emma, and Alastair is looking after the money. Contact Mary Jane at 669 5129 or email [maryjane@camell.me.uk](mailto:maryjane@camell.me.uk) for info and forms. Forms also at Meeting.

## ANNOUNCEMENTS

### Co-clerk

Thank you to Alison Chalmers who joined Chris Booth as co-clerk for Local Meeting for Business from April.

### Ideas for collections?

Causes should have a local friend as advocate to speak once in meeting, and preferably fit in one or more of our preferred categories:

- Local charities
- Work in developing countries
- Peace
- Charities for people on the margins

Suggestions are brought to meeting for business from time to time. Please let Mary Woodward know your idea.

### Slightly Older Young Friends

In April, SOFA group had a barbeque at Sarah's allotment and sowed some seeds and laid a path. We also go cycling, play frisbee and ... if you would like to be part of the SOFA Google group, email [carolineevens@hotmail.com](mailto:carolineevens@hotmail.com)

## READERS ALSO ENJOYED ...

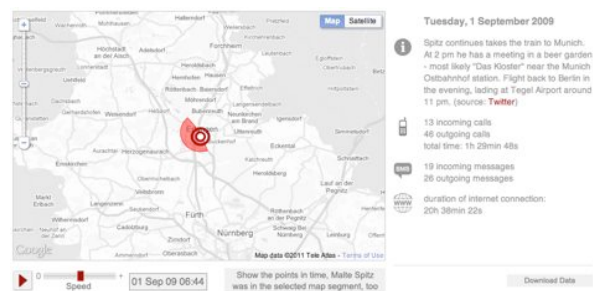
**Film: Fish Tank** (2009). Also watch the short film on the same DVD 'Wasp'. Slice of life, really well portrayed, human people at the poor end of Essex: 'Live, love, and give as good as you get'.

## HAPPY BIRTHDAY!

To **Callum** who be 12 on the 5<sup>th</sup> May.



## UNMISSABLE ON THE INTERWEB



**Your mobile phone as the ultimate tracking device** (and it doesn't need to be an iPhone) – <http://bit.ly/ksdMOs>

Maggie and Millie and Molly and May (went down to the beach to play one day)

[www.youtube.com/watch?v=W2pZX5aQGpo](http://www.youtube.com/watch?v=W2pZX5aQGpo)

**YOUR STORY HERE** – The newsletter is usually distributed on and just before the last Sunday of each month. Send things you'd like to see or recommend, from Eskimos to Facebook, to Neil Turner, [neilturn@gmail.com](mailto:neilturn@gmail.com). The official deadline is the 2nd last Sunday.